



Before you install SAM Broadcaster - Select the right Database:

Firebird:

Firebird is already packaged with the SAM Broadcaster installation file. Users who don't want to go through the hassle of installing a database server separately will appreciate this option.

However, there are a few trade-offs. Firebird is slightly slower than MySQL or MS SQL. As such, it's best to use another database if your music library contains more than 20,000 tracks. Also, while there's no problem integrating Firebird with dynamic PHP, ASP, or other Web languages, many developers don't have experience working with Firebird. So MySQL or MS SQL might be a better option if Web integration is high on your list of priorities.

MySQL:

Power users should use this database. This means downloading and installing MySQL separately, and before you install SAM Broadcaster.

Installing MySQL is quite simple and worth the effort. It's fast and used for most open-source languages like PHP. Plus, the community edition of MySQL is free.

The only drawback is that it's a fairly heavy download.

I will always recommend **MySQL** - Database. it is recommended for large music libraries and for stations that need simple web integration. Before going on, read this Help Document to decide which database is best for you.

Before you start, make sure MySQL is installed on your computer.

[CLICK HERE](#) (for mysql-4.0.26.zip) to download and install MySQL v4.0.26 which is the currently recommended version for SAM 4.2.2.

Download MYSQL to your Desktop then unzip it then read the READ-ME file for instructions
Simple to use

When installing MySQL, don't change the program's defaults, except when it asks to specify a root password (make sure to write it down for later use). You can simply click "next" the rest of the time.

[CLICK HERE](#) to Download SAM 4.2.2.zip and install SAM Broadcaster, following the installer's instructions.

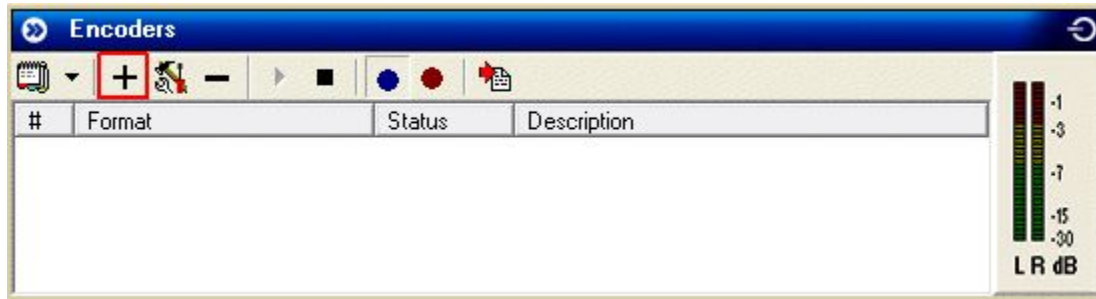
After that's done, run SAM Broadcaster to wrap up the installation process.

During the SAM Broadcaster set-up:

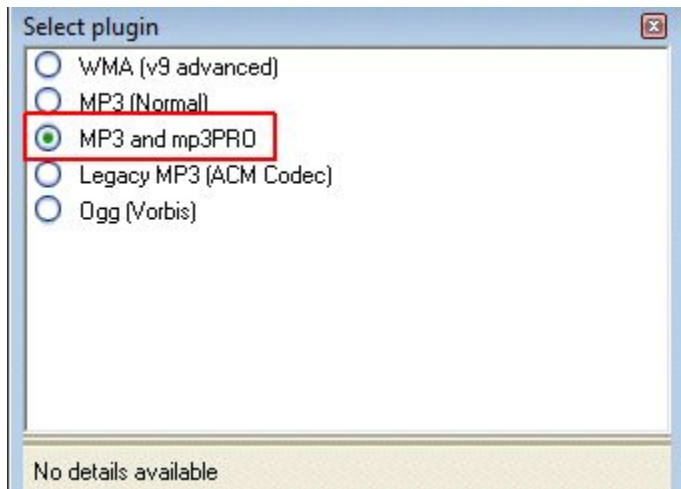
- Select the MySQL database
- Change the default database settings and enter your root password from earlier. We recommend not changing any of the other settings
- Enter your registration key, if available



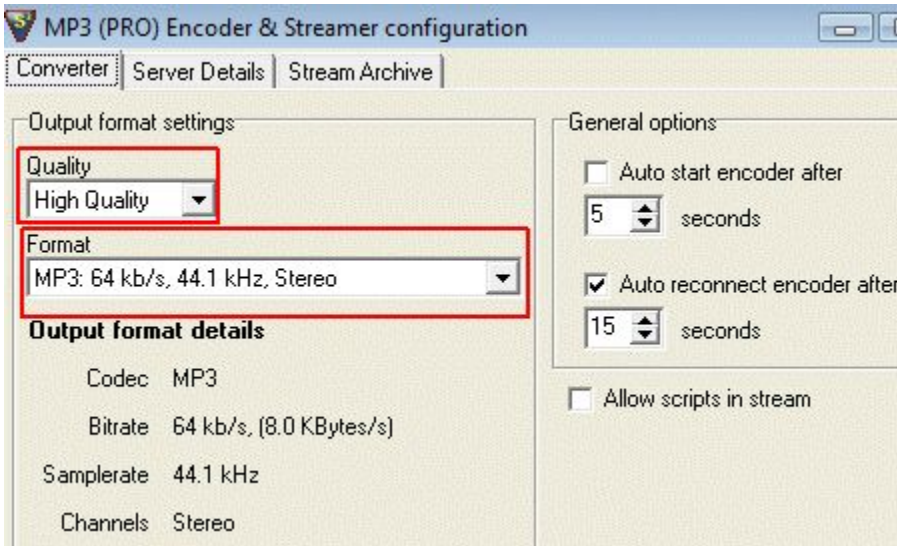
Make sure, your SAM-Layout showing Encoder, Click on the + Sign to add a radio streaming



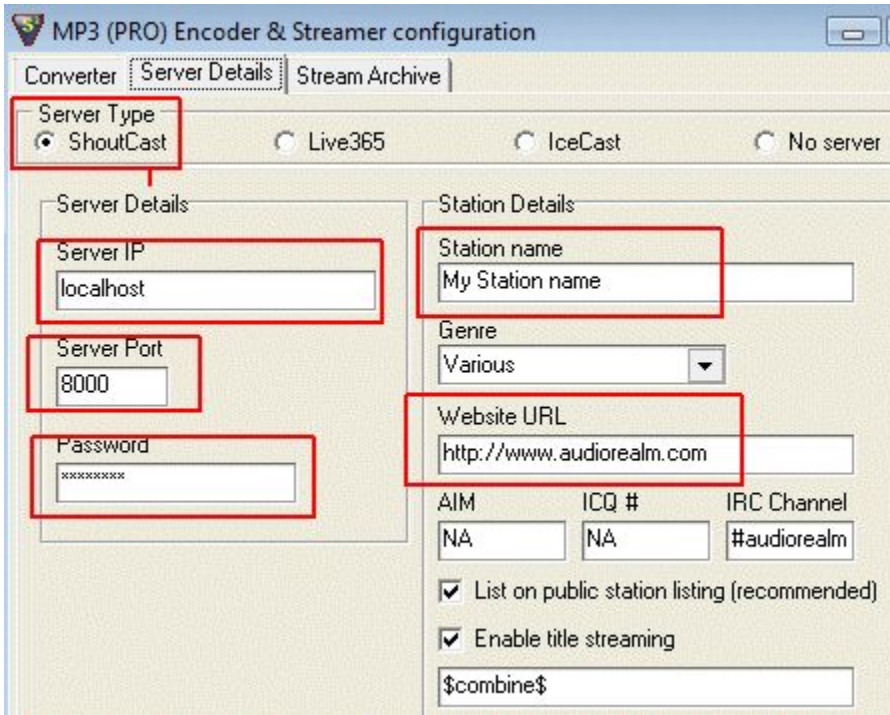
It will pop up a small windows, mark there MP3 and MP3 PRO



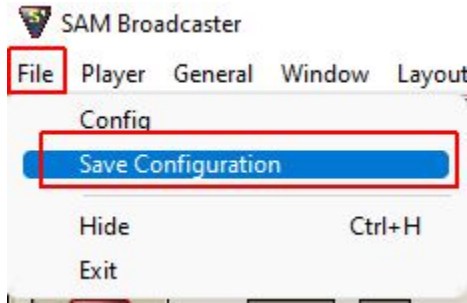
When you click OK, it will pop up another small windows, which allow you to configure your quality of streaming and format. Select according to your Radio-streaming setting.



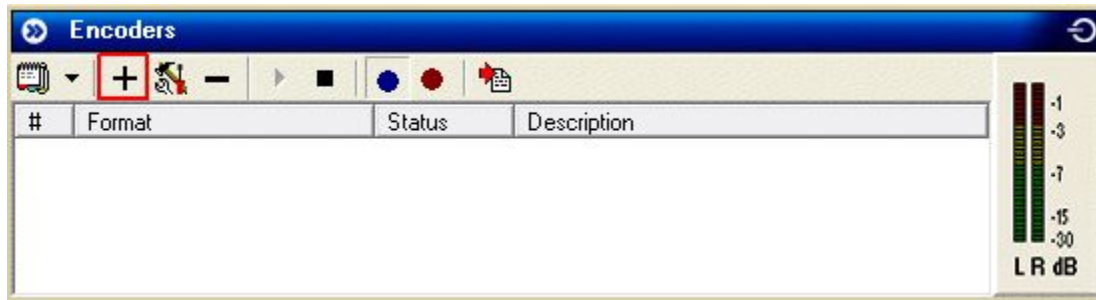
Select from top now the TAB - Server Details. You need to put in Server Type, Server IP, Server Port and your DJ-Password. These Information will be provided from your Radio Streaming.



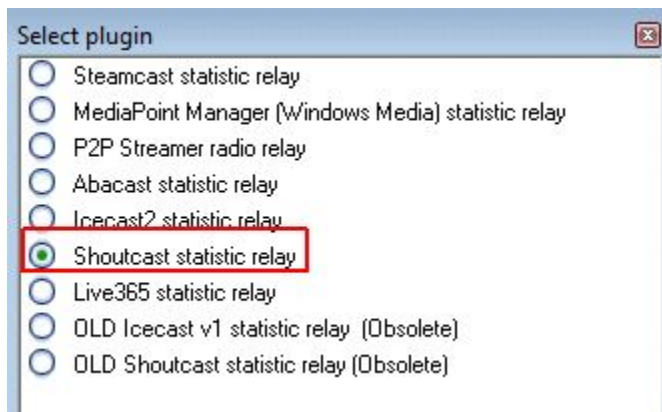
Select from top menu - FILE and click at SAVE COBFIGURATION



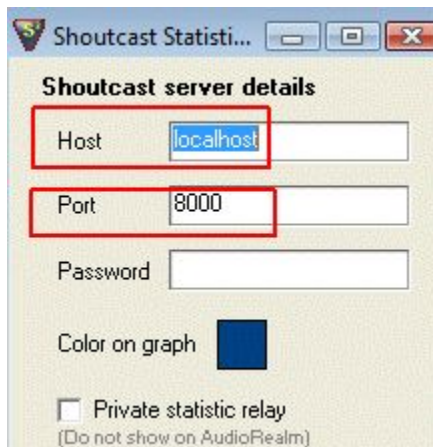
The next step configuring Statistic Relay is not essential, only when you need to know following information: Number of Listener and some server information. To configure Statistic Relay click again + Sign at encoder



Mark the SHOUTCAST STATISTIC RELAY.



Nex window allow you to configure Host, Port and Password, which are same as you used above.



Don't forget to save this configuration from top menu - FILE and click at SAVE COBFIGURATION

I hope this was helpful.

Attention: For Setting your Mic in SAM, please read our instruction: [How to Set MIC in SAM 4.2](#)